

# Better World Better Tomorrow by Korea Land and Housing Corporation

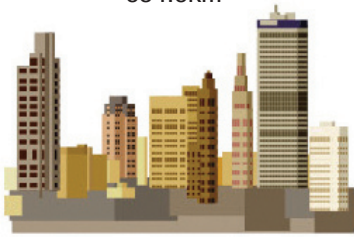
## Introduction of LH

LH (Korea Land and Housing Corporation), a state-owned enterprise, was founded with a vision of providing affordable and quality public housing and leading efficient land development in order to enrich the lives and living conditions of Korean people. LH was established in 1962, and its paid-in capital touches a level of US \$27.5 billion in fiscal 2012. For half a century, LH has built from small-scale apartment complexes to large scale cities throughout the nation. For the national economic growth, LH has developed industrial complexes and free economic

zones. LH also has carried out national policies for balanced national development and making new growth engines through building a multi-functional administrative city and innovative cities. Also, LH has supplied more than two million social housing units that include 550 thousand public rental housings for low & mid income families to stabilize housing problems and improve quality of life. LH will continue to realize our vision for a brighter future based on its expertise as one of the world's most competitive land and housing service providers.

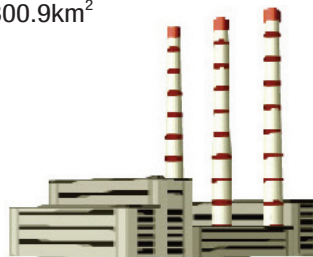
## Main Achievement

654.6km<sup>2</sup>



81% of Korea's total developed residential complex

300.9km<sup>2</sup>



15% of Korea's total developed industrial complex

2.35million  
housings



14% of Korea's total constructed housing

## Core Businesses

### 1. Residential Development

- LH develops self-sufficient and futuristic cities that highlight regional characteristics based on its experience.
- Experience

Number of Projects	Area (1,000m <sup>2</sup> )	Project Cost (1 million US \$)
516	654,680	229,700

### • Service

Sector	Services
Government Consulting	- National territorial development planning - Legal support: Urban and regional planning law. District planning guide
Planning & F/S	- Market analysis and strategy - Master plan study
PM/CM	- PM/CM (Project Management/Construction Management) throughout the entire project cycle of residential complex development

### • Major Projects

The 1st New Town in the metropolitan area **Bundang New Town**



· Area of development : 19,640,000m<sup>2</sup> · Project Period : 1989 ~ 1996  
· Population : 390,000 · Project Cost : US\$ 3.8 billion

The 2nd New Town in the metropolitan area **Dongtan New Town**



· Area of development : 9,036,000m<sup>2</sup> · Project Period : 2001 ~ 2013  
· Population : 124,000 · Project Cost : US\$ 3.9 billion